

HARVEST.com

wireless telemetry 0800 HARVEST

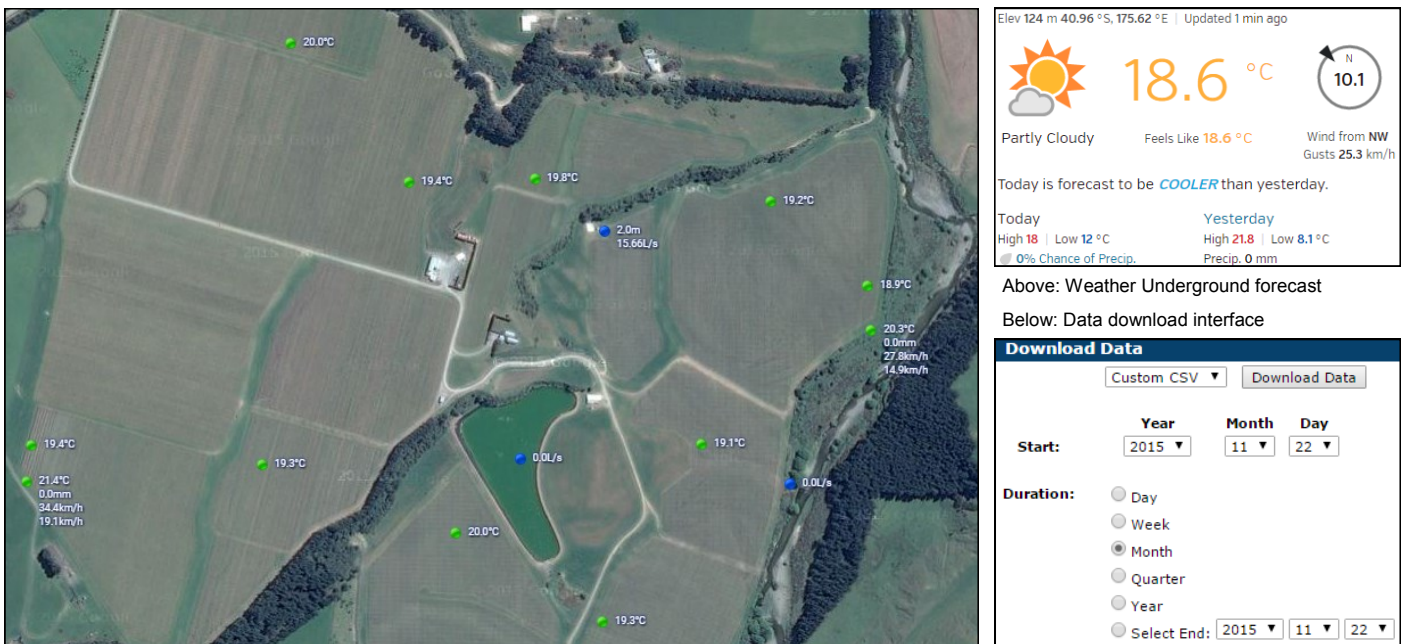
December 2015 Newsletter

Getting the Best Out of Your Harvest System

Google Maps

Harvest recently introduced a map view of your data to compliment our existing graphical view. Features include:

- Only data that is nominated is plotted (e.g. humidity or soil moisture may not be wanted)
- Trend arrows available (useful for parameters like air temperature, wind machine RPM or flow meter rates)
- Full screen view (see below example)
- Easier to see trends that aren't always as clear to view on graphs (e.g. frost drift)
- Planned future updates include features like auto-refresh and changing point colours to indicate alarm state



Weather Underground

Weather Underground (<http://wunderground.com>) is the worlds largest collection of weather data collected from weather stations all around the world. As part of their service Weather Underground also offer forecasting based on localised weather data. Harvest is now able to send your data to Weather Underground to enable localised forecasting based on your localised data. There is currently no extra charge for the integration of Weather Underground.

Note: this forecast should be regarded as another tool – not a replacement for specialised forecasts like offerings from Niwa, Climate Consulting and MetService

Downloading Data

All data collected from your Harvest system can also be downloaded. Once logged in then under the Options menu there is a link to Download Data. From the Download Data menu you can then choose date ranges/durations. The most commonly used file type is CSV which is compatible with all spreadsheet programs and many 3rd party applications. If you have any questions please don't hesitate to email or call our Tech Support team.

Maintenance

The Harvest system is designed to have minimal maintenance however regular checks are highly recommended. Regular maintenance checks can ensure your system operates reliably. For more information about the checks we recommend visiting the [Product Support](#) section on our website.

Note: In Marlborough and Wairarapa we are now offering annual service contracts. This may be extended to other regions in the future. Contact us by phone or email for information on this service.

New Features and Products

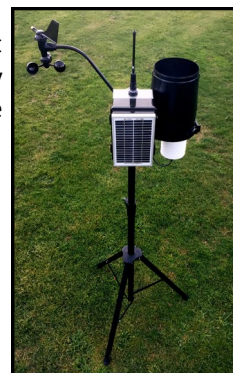
ITU Mini System

January 2016 will mark the release of our ITU Mini weather station which is designed as a lower cost alternative to our full ITU system. The ITU Mini system is designed for users who are wanting an entry level weather station for small vineyard/orchards blocks, high country farms or large lifestyle blocks. The Mini has no option to connect to wireless sensors but still allows for a broad range of hardwired sensors.

New Sensors

Harvest is currently exploring a range of new sensors including:

- Electric fence monitoring
- Gate/driveway vehicle sensors
- Replacement wind speed and direction sensor with serviceable bearings
- Low cost ultrasonic wind speed and direction sensor



Updated System Software and Cloud Migration

Since September 2014 a team of software programmers have been working on a new system that will replace the existing Harvest front (how you access data) and backend (the behind the scenes - storing of data etc) system. This new system will also be migrated to Amazons cloud servers (AWS). The migration to Amazons cloud servers will mean that our system will have even higher availability plus allow for further growth. Our current servers hosted in our secure computer room are nearing capacity. Expected release time is 3rd quarter 2016.



Automatic Network Switching

From early 2016 all new Harvest systems will come default with a "Global" SIM and a new multi-band cellular antenna to allow for automatic cellular network selection in New Zealand, Australia and the USA. In New Zealand the modem in our system will select from Vodafone and Spark while in Australia it will select from Vodafone and Optus. The key benefits is increased reliability at critical times (eg for vineyards with frost alarms). Cellular providers have their scheduled maintenance windows at around 2-3am in the morning. This is a problem for those who are using their system as a frost alarm. The majority of systems are placed in areas where there is often coverage by two networks meaning that if one network goes down the system will automatically switch to the network that is working.

New Antennas

In conjunction with the new automatic network switching Harvest is releasing two new antennas. A multi band cellular antenna to support multiple cellular networks and a new high gain wireless antenna. These two new antennas are due for release in early 2016 with the multi-band cellular antenna being standard on all new systems.

Harvest Resellers and Service Agents

We have recently updated our website with an updated list of service agents and resellers - check them out on our website under [Resellers and Service Agents](#).

The Harvest Team Continues to Expand

- The tech support team has four members (Philip Harvey, Logan Clarke, Tyler Batchelor and Daniel Beard) with Philip as team leader.
- The production team (building of product/shipping/repairs) has expanded and now numbers nine who are working to put together orders and have them dispatched in record time.
- The sales team is lead by Andrew Munn with Sam Tanner assisting. Michael Hollingsworth has moved sideways and now deals primarily with repairs, quality control and purchasing.
- Rhys Mill has joined the team in a field service and installation role based in Blenheim, Marlborough. If you are based in Marlborough you are sure to see him out and about (see below picture).

For a full staff directory listing check out our website under [About](#).

